

**RETAIL**

**LOGISTICS**

**INDUSTRY**

Product Catalog

**PORTABLE DEVICES**



**Inside logistics, retail and industry ACD offers robust systems and solutions that, thanks to reliable and flawless work, make the daily working routine easier. Our products impress thanks to the simple and intuitive entry as well as increased durability, even in the most adverse of conditions.**





# TABLE OF CONTENTS

<b>01 / Mobile Handheld Computers</b>	04
<b>02 / Wearable Scanner</b>	13
<b>03 / Vehicle Mount Terminals</b>	22
<b>04 / Softwaretools</b>	31
04.1 Softwaretools General	32
04.2 Softwaretools Mobile Handheld Computers	34
04.3 Softwaretools Wearable Scanner	37
04.4 Softwaretools Vehicle Mount Terminals	39
<b>05 / Mobile Workstation</b>	41
<b>06 / Pick by Voice</b>	61

# 01 / MOBILE HANDHELD COMPUTERS



## Robust all-rounders for fast and efficient work

Mobile Handheld Computer for logistics, retail and industry applications are developed for the daily work routine in tough environments. Freely configurable function keys, an integrated Imager (shortrange, midrange, advanced rang and longrange), impact-proof housing, the proven quick-entry keyboard and a premium TFT color-display with LED back-light are all integral components of these products. Optional accessories that are also available include grips, keyboard variants, RFID (HF, LF, UHF), BT-compatible close-range network.





# 01 / Mobile Handheld Computers M2Smart<sup>®</sup>SE

## TECHNICAL DATA

<b>Housing:</b>	ABS/PC	<b>Touchscreen:</b>	Capacitive, surface hardness 7H
<b>Protection:</b>	IP54/IP65	<b>Keyboard:</b>	Side On-/Off key
<b>Operating temperature:</b>	-20 °C to 50 °C/-4 °F to 122 °F*	<b>Barcode scanner (optional):</b>	Integrated in housing (side scanner keys) 2D shortrange Imager SE4770 (IP65) or 2D midrange Imager SE4750MR (IP54)
<b>Storage temperature:</b>	-20 °C to 60 °C/-4 °F to 140 °F	<b>Camera:</b>	5 MP auto-focus camera with lighting
<b>Dimensions:</b>	174 x 82 x 28 mm (L x W x D)	<b>Processor:</b>	NXP <sup>®</sup> ** i.MX8M Mini, 4x Cortex A53 (4x 1.8 GHz) and 1x Cortex M4 (1x 400 MHz)
<b>Weight:</b>	Approx. 390 g	<b>Memory:</b>	ACD Standard: 16 GB Flash, 2 GB RAM Optional: 32 GB Flash, 4 GB RAM
<b>Power supply:</b>	Quick-change rechargeable battery, li-ion with 22.8 Wh (6,000 mAh/3.8 V), docking station incl. battery charger for spare battery	<b>Operating system:</b>	Android <sup>™</sup> *** Industrial+
<b>Display:</b>	5" color TFT Display with LED backlight, 1280 x 720 pixels, 400 cd/m <sup>2</sup> , 3 Status LED		

## TECHNICAL DATA



### Options:

- WLAN according to IEEE 802.11a/b/g/n/ac/d/h/e/i/r/k/w/v (2.4 GHz/5 GHz) incl. BT-compatible close-range network 5.0  
WLAN Security<sup>1</sup>: WEP, WPA, IEEE802.11i (Personal and Enterprise), WPA2, WPA2-PSK  
802.1x: authentication
- HF-RFID/NFC
- SOTI® MobiControl

### ACD All-in-One:

- ACD All-in-One Support & Maintenance for operating system and firmware.
- Includes firmware updates, upgrades to higher OS versions, security patches and unlimited phone support

\* The device should only be used in the deep-freeze area after the starting process

\*\* Registered trademark - NXP

\*\*\* Registered trademark - Android™ - Android is a trademark of Google LLC

<sup>1</sup> Standard codification validated by ACD.

Subject to technical modifications.



# OPTIONS & ACCESSORIES



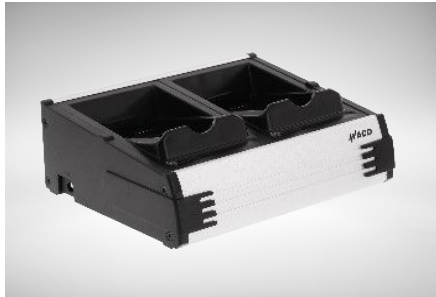
DS2Smart® charging and transmission box



DS2Smart® charging box



DS2Smart® developer box



DS2Battery charging box (2-fold)



Replacement Battery Plus



M2Key16 Logistics



M2Longrange (SE4850)



M2UHF-RFID Midrange



M2Logistics protection caps set



M2Grip5 for M2Smart®SE without scanner or with 2D shortrange Imager



M2Grip5 SE for M2Smart®SE with 2D midrange Imager



Bag with closure tab  
(suitable for devices without grip)  
Note: Not for sale in North America



Bag  
(suitable for devices without grip)  
Note: Not for sale in North America



Holster bag  
(suitable for devices with grip)  
Note: Not for sale in North America



Capacitive touch pen



## OPTIONS & ACCESSORIES



M2Smart®SE display protection film 5 inch / low reflection



M2Smart®SE display protection film 5 inch



M2Smart®SE Holder incl. RAM Mount



Vehicle holster bag  
(suitable for devices with grip)

Configure your equipment directly in the online configurator at:

<https://www.acd-gruppe.de/en/mobile-devices/mobile-handheld-computer/mobile-terminal-configurator/>

Our sales department will also be happy to help you with the selection under the telephone number +49 7392 708-499



# 01 / Mobile Handheld Computers

## M270SE

### TECHNICAL DATA

<b>Housing:</b>	ABS	<b>Touchscreen:</b>	Capacitive, minimum surface hardness 6H
<b>Protection:</b>	IP54	<b>Keyboard:</b>	Quick-entry keyboard with alphanumerics function, 15 mm space between keys, 15 keys in hard case design, 10 function keys
<b>Operating temperature:</b>	0 °C to 40 °C/32 °F to 104 °F*	<b>Barcode scanner:</b>	2D shortrange Imager SE4750SR, integrated in housing, (side scanner keys)
<b>Storage temperature:</b>	-20 °C to 70 °C/-4 °F to 158 °F	<b>Processor:</b>	NXP®** i.MX8M Mini, 4x Cortex A53 (4x 1,8 GHz) and 1x Cortex M4 (1x 400 MHz)
<b>Dimensions:</b>	219 x 62/83 x 39/41 mm (L x W x D)	<b>Memory:</b>	16 GB Flash, 2 GB RAM optional: 32 GB Flash, 4 GB RAM Memory expandable via µSD card
<b>Weight:</b>	Approx. 500 g	<b>Operating system:</b>	Android™*** Industrial+
<b>Power supply:</b>	Quick-change battery, li-ion with 24.5 Wh (3,400 mAh/7.2 V), docking station or battery charger	<b>Interfaces:</b>	USB OTG, Ethernet
<b>Display:</b>	3.5" color TFT Display with LED backlight, 480 x 640 pixels, 400 cd/m <sup>2</sup> , Status LED		

## TECHNICAL DATA



### Options:

- 2D midrange Imager SE4750MR
- 2D advanced range Imager SE5500
- 2D longrange Imager SE4850 with grip
- WLAN according to IEEE 802.11a/b/g/n/ac/d/h/e/i/r/w/v (2.4 GHz/5 GHz) incl. BT-compatible close range network 5.0  
WLAN Security<sup>1</sup>: WEP, WPA, IEEE802.11i (Personal and Enterprise), WPA2, WPA2-PSK  
802.1x: Authentifizierung

### ACD All-in-One:

- ACD All-in-One Support & Maintenance for operating system and firmware.
- Includes firmware updates, upgrades to higher OS versions, security patches and unlimited phone support

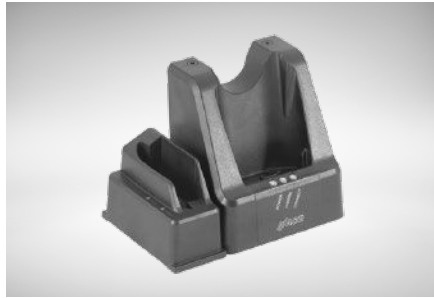
- \* Use down to -20 °C in the cold room or outdoors is permissible. The device should have been in operation for at least 20 minutes beforehand.
- \*\* Registered trademark - NXP
- \*\*\* Registered trademark - Android™ - Android is a trademark of Google LLC
- <sup>1</sup> Standard codification validated by ACD.  
Subject to technical modifications.



# OPTIONS & ACCESSORIES



DS270 standard version



DS270 NP charging and transmission box



Battery charging station NP270 (1-fold)



Battery charging station NP270 (5-fold)



Replacement Battery



Grip



RAM Mount mounting device for Mobile Handheld Computers



M270xx zipper and loop



M270xx zipper



M270xx Mount



M270xx Mount Set RAM Mount



M270xx truck mounting



M270xx truck mounting holster



M270xx bag 1



M270xx holster

## OPTIONS & ACCESSORIES



M270xx holster bag



M270xx belt



M270xx Strap for bags (not adjustable)



M270xx Strap for bags (adjustable)



Capacitive touch pen

Configure your equipment directly in the online configurator at:

<https://www.acd-gruppe.de/en/mobile-devices/mobile-handheld-computer/mobile-terminal-configurator/>

Our sales department will also be happy to help you with the selection under the telephone number +49 7392 708-499

# 02 / WEARABLE SCANNER



## Ergonomic wearable scanners for logistics

Consistently developed on the basis of requirements from logistics and industry, the HasciSE wearable scanners offers - as one of the smallest and lightest - the optimal solution for small parts picking, as well as work on the forklift or an industrial truck, where work is usually „hands-free“. The HasciSE can also be used on large production lines in industry and, due to the wide range of operating temperatures, production companies in the food sector can also use the HasciSE without hesitation.





## 02 / Wearable Scanner HasciSE SR

### TECHNICAL DATA

<b>Housing:</b>	ABS	<b>Keyboard:</b>	Two buttons for switching on and off and for scanning External key can be contacted via pushbuttons
<b>Protection:</b>	IP54	<b>Barcode scanner:</b>	2D shortrange Imager SE4750SR integrated in housing; opportunity to scan DotCodes as option
<b>Operating temperature:</b>	-20 °C to 50 °C/-4 °F to 122 °F	<b>Interfaces:</b>	BT-compatible close-range network 4.0
<b>Charging temperature:</b>	10 °C to 40 °C/50 °F to 104 °F		
<b>Storage temperature:</b>	-20 °C to 20 °C/-4 °F to 68 °F		
<b>Dimensions:</b>	58 x 45 x 16 mm (L x W x D)		
<b>Weight:</b>	52 g		
<b>Power supply:</b>	Battery, li-po with 2.405 Wh (650 mAh/3.7 V), docking station		
<b>Display:</b>	Status LED		

# TECHNICAL DATA



**Special features:**

- Scan trigger via scanner key
- Scan feedback via vibration, sound and visually
- Pairing via BT-compatible close-range network
- Easy pairing via ACD EasyToConnect 2.0 or ACD HasciDataService

**Compatibility with all BT-enabled devices:**

- BT 4.0 and above

**Compatibility with ACD devices:**

- Mobile Handheld Computer M2Smart®SE
- Mobile Handheld Computer M270SE
- Vehicle Mount Terminal MFT1xSE series

**ACD All-in-One:**

- ACD All-in-One Support & Maintenance for operating system and firmware.
- Includes firmware updates, security patches and unlimited phone support

Subject to technical modifications.





## 02 / Wearable Scanner HasciSE MR

### TECHNICAL DATA

<b>Housing:</b>	ABS	<b>Keyboard:</b>	Two buttons for switching on and off and for scanning External key can be contacted via pushbuttons
<b>Protection:</b>	IP54	<b>Barcode scanner:</b>	2D midrange Imager SE4750MR integrated in housing; opportunity to scan DotCodes as option
<b>Operating temperature:</b>	-20 °C to 50 °C/-4 °F to 122 °F	<b>Interfaces:</b>	BT-compatible close-range network 4.0
<b>Charging temperature:</b>	10 °C to 40 °C/50 °F to 104 °F		
<b>Storage temperature:</b>	-20 °C to 20 °C/-4 °F to 68 °F		
<b>Dimensions:</b>	58 x 45 x 16 mm (L x W x D)		
<b>Weight:</b>	52 g		
<b>Power supply:</b>	Battery, li-po with 2.405 Wh (650 mAh/3.7 V), docking station		
<b>Display:</b>	Status LED		



## TECHNICAL DATA



**Special features:**

- Scan trigger via scanner key
- Scan feedback via vibration, sound and visually
- Pairing via BT-compatible close-range network
- Easy pairing via ACD EasyToConnect 2.0 or ACD HasciDataService

**Compatibility with all BT-enabled devices:**

- BT 4.0 and above

**Compatibility with ACD devices:**

- Mobile Handheld Computer M2Smart®SE
- Mobile Handheld Computer M270SE
- Vehicle Mount Terminal MFT1xSE series

**ACD All-in-One:**

- ACD All-in-One Support & Maintenance for operating system and firmware.
- Includes firmware updates, security patches and unlimited phone support

Subject to technical modifications.



## 02 / Wearable Scanner HasciSE AR

### TECHNICAL DATA

<b>Housing:</b>	ABS	<b>Keyboard:</b>	Two buttons for switching on and off and for scanning External key can be contacted via pushbuttons
<b>Protection:</b>	IP54	<b>Barcode scanner:</b>	2D advanced range Imager SE5500, integrated in housing; opportunity to scan DotCodes as option
<b>Operating temperature:</b>	-20 °C to 50 °C/-4 °F to 122 °F	<b>Interfaces:</b>	BT-compatible close-range network 4.0 NFC
<b>Charging temperature:</b>	10 °C to 40 °C/50 °F to 104 °F		
<b>Storage temperature:</b>	-20 °C to 20 °C/-4 °F to 68 °F		
<b>Dimensions:</b>	58 x 45 x 16 mm (L x W x D)		
<b>Weight:</b>	49 g		
<b>Power supply:</b>	Battery, li-po with 2.405 Wh (650 mAh/3.7 V), docking station		
<b>Display:</b>	Status LED		

# TECHNICAL DATA



**Special features:**

- Scan trigger via scanner key
- Scan feedback via vibration, sound and visually
- Pairing via BT-compatible close-range network
- Easy pairing via ACD EasyToConnect 2.0 or ACD HasciDataService
- Software-free pairing via NFC

**Compatibility with all BT-enabled devices:**

- BT 4.0 and above

**Compatibility with ACD devices:**

- Mobile Handheld Computer M2Smart®SE
- Mobile Handheld Computer M270SE
- Vehicle Mount Terminal MFT1xSE series

**ACD All-in-One:**

- ACD All-in-One Support & Maintenance for operating system and firmware.
- Includes firmware updates, security patches and unlimited phone support

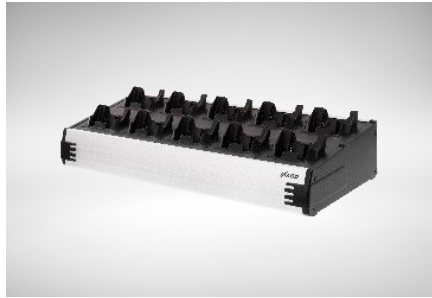
Subject to technical modifications.



# OPTIONS & ACCESSORIES



DSHasciSE charging box (2-fold)



DSHasciSE charging box (10-fold)



HasciSE Zipper-Set round



HasciSE Zipper round



HasciSE Zipper-Set square



HasciSE Zipper square



HasciSE Mounting plate



ACD hand strap right incl. finger switch (size S)



ACD hand strap right incl. finger switch (size M/L)



ACD hand cuff right incl. finger switch (size 7)



ACD hand cuff right incl. finger switch (size 8)



ACD hand cuff right incl. finger switch (size 9)



ACD hand cuff right incl. finger switch (size 10)



ACD hand cuff left incl. finger switch (size 7)



ACD hand cuff left incl. finger switch (size 8)

## OPTIONS & ACCESSORIES



ACD hand cuff left incl. finger switch (size 9)



ACD hand cuff left incl. finger switch (size 10)

Configure your equipment directly in the online configurator at:

<https://www.acd-gruppe.de/en/mobile-devices/mobile-handheld-computer/mobile-terminal-configurator/>

Our sales department will also be happy to help you with the selection under the telephone number +49 7392 708-499

# 03 / VEHICLE MOUNT TERMINALS



## Robust all-rounders on order picking vehicles

To optimize demanding logistics applications, the vehicle mount and forklift terminals of the MFT1xSE series with large colour display (three different display sizes), touch screen (capacitive or resistive) and individually configurable function keys offer more space for displaying complex applications and excellent readability, even in sunlight. The sturdy aluminum housing offers sufficient impact resistance, dust protection, water protection and increased durability even in harsh industrial environments down to -30 °C/-22 °F.





## 03 / Vehicle Mount Terminals

# MFT10SE

### TECHNICAL DATA

<b>Housing:</b>	Aluminium, powder-coated	<b>Touchscreen:</b>	Resistive, minimum surface hardness of 3H, with robust, chemically hardened beaming glass
<b>Resilience:</b>	Shock and Vibration according to EN 60068-2 Part -6, -27	<b>Keyboard:</b>	Virtual on-screen keyboard, 5 freely programmable function keys
<b>Protection:</b>	IP54 (optional IP65)	<b>Graphics:</b>	Integrated graphics unit, DirectX12 support
<b>Operating temp.:</b>	-30 °C to 45 °C/-22 °F to 113 °F	<b>Processor:</b>	Intel Atom* QuadCore up to 4x 1.83 GHz (x5-E3940, Apollo Lake)
<b>Storage temp.:</b>	-30 °C to 70 °C/-22 °F to 158 °F	<b>Memory:</b>	Windows*** 10 IoT Enterprise + IGEL OS: 4 GB RAM, 64 GB flash - opt. 8 GB RAM, 128 GB flash Windows*** 11 IoT Enterprise: 8 GB RAM, 64 GB flash - opt. 128 GB flash
<b>Rel. humidity:</b>	5 % to 95 % (in operation), non-condensing	<b>Operating system:</b>	Windows*** 10 IoT Enterprise, Windows*** 11 IoT Enterprise, IGEL OS
<b>Dimensions:</b>	270 x 235 x 62 mm (W x H x D; without accessories)	<b>BIOS:</b>	UEFI BIOS, update-capable, bootable from LAN or USB as standard
<b>Weight:</b>	Approx. 2.8 kg (without accessories)	<b>Interfaces:</b>	Ethernet 100-BaseT/10-BaseT autoswitch, RS232, 1x USB 3.0, 3x USB 2.0, integrated speaker in speech output quality, audio/microphone input via jack plugs
<b>Power supply:</b>	8.5 to 72 V DC (electrically isolated)		
<b>Power consumption:</b>	Approx. 19 W (as standard), max. 70 W (freezer use)		
<b>Display:</b>	10.4" color TFT display XGA with LED backlight, 1024 x 768 pixels, 350 cd/m <sup>2</sup> , 2 status LEDs		

## TECHNICAL DATA



### Special features:

- Integrated energy buffer for short-term bridging of power breakdowns
- 2 integrated antennae
- Fan-less design
- Device start-up and shutdown via freely definable function keys (ATX function) and via ignition
- Sunlight readable

### Options:

- WLAN IEEE 802.11a/b/g/n/ac/x/k/v/r (2.4 GHz/5 GHz) incl. BT-compatible close-range network WLAN Security<sup>1</sup>: WPA, IEEE802.11i (Personal and Enterprise), WPA2, WPA2-PSK  
802.1x: PEAP-MSCHAPv2, PEAP-GTC, PEAP-TLS, EAP-TLS, EAP-TTLS, EAP-FAST, LEAP
- 10.4" color TFT display SVGA with LED backlight, 800 x 600 pixels, 400 cd/m<sup>2</sup>, resistive
- 10.4" color TFT display XGA with LED backlight, 1024 x 768 pixels, 350 cd/m<sup>2</sup>, capacitive
- SOTI<sup>®</sup> MobiControl
- Integrated battery for up to 1.5 hours of operation

### ACD All-in-One:

- ACD All-in-One Support & Maintenance for operating system and firmware.
- Includes firmware updates, upgrades to higher OS versions, security patches and unlimited phone support

\* Registered trademark - Intel Atom  
 \*\* Registered trademark - Microsoft  
 1 Standard codification validated by ACD.  
 Subject to technical modifications.





## 03 / Vehicle Mount Terminals

# MFT12SE

### TECHNICAL DATA

<b>Housing:</b>	Aluminium, powder-coated	<b>Touchscreen:</b>	Resistive, minimum surface hardness of 3H, with robust, chemically hardened beaming glass
<b>Resilience:</b>	Shock and Vibration according to EN60068-2 Part -6, -27	<b>Keyboard:</b>	Virtual on-screen keyboard, 5 freely programmable function keys
<b>Protection:</b>	IP54 (optional IP65)	<b>Graphics:</b>	Integrated graphics unit, DirectX12 support
<b>Operating temp.:</b>	-30 °C to 45 °C/-22 °F to 113 °F	<b>Processor:</b>	Intel Atom* QuadCore up to 4x 1.83 GHz (x5-E3940, Apollo Lake)
<b>Storage temp.:</b>	-30 °C to 70 °C/-22 °F to 158 °F	<b>Memory:</b>	Windows*** 10 IoT Enterprise + IGEL OS: 4 GB RAM, 64 GB flash - opt. 8 GB RAM, 128 GB flash Windows*** 11 IoT Enterprise: 8 GB RAM, 64 GB flash - opt. 128 GB flash
<b>Rel. humidity:</b>	5 % to 95 % (in operation), non-condensing	<b>Operating system:</b>	Windows*** 10 IoT Enterprise, Windows*** 11 IoT Enterprise, IGEL OS
<b>Dimensions:</b>	308 x 268 x 63 mm (W x H x D; without accessories)	<b>BIOS:</b>	UEFI BIOS, update-capable, bootable from LAN or USB as standard
<b>Weight:</b>	Approx. 3.6 kg (without accessories)	<b>Interfaces:</b>	Ethernet 100-BaseT/10-BaseT autoswitch, RS232, 1x USB 3.0, 3x USB 2.0, integrated speaker in speech output quality, audio/microphone input via jack plugs
<b>Power supply:</b>	9 to 72 V DC (electrically isolated)		
<b>Power consumption:</b>	Approx. 19 W (as standard), max. 70 W (freezer use)		
<b>Display:</b>	12.1" color TFT display XGA with LED backlight, 1024 x 768 pixels, 500 cd/m <sup>2</sup> , 2 status LEDs		



## TECHNICAL DATA



### Special features:

- Integrated energy buffer for short-term bridging of power breakdowns
- 2 integrated antennae
- Fan-less design
- Device start-up and shutdown via freely definable function keys (ATX function) and via ignition
- Sunlight readable

### Options:

- WLAN IEEE 802.11a/b/g/n/ac/x/k/v/r (2.4 GHz/5 GHz) incl. BT-compatible close-range network WLAN Security<sup>1</sup>: WPA, IEEE802.11i (Personal and Enterprise), WPA2, WPA2-PSK  
802.1x: PEAP-MSCHAPv2, PEAP-GTC, PEAP-TLS, EAP-TLS, EAP-TTLS, EAP-FAST, LEAP
- SOTI<sup>®</sup> MobiControl
- Integrated battery for up to 1.5 hours of operation

### ACD All-in-One:

- ACD All-in-One Support & Maintenance for operating system and firmware.
- Includes firmware updates, upgrades to higher OS versions, security patches and unlimited phone support

\* Registered trademark - Intel Atom  
 \*\* Registered trademark - Microsoft  
<sup>1</sup> Standard codification validated by ACD.  
 Subject to technical modifications.



## 03 / Vehicle Mount Terminals MFT15SE

### TECHNICAL DATA

<b>Housing:</b>	Aluminium, powder-coated	<b>Touchscreen:</b>	Resistive, minimum surface hardness of 3H, with robust, chemically hardened beaming glass
<b>Resilience:</b>	Shock and Vibration according to EN 60068-2 Part -6, -27	<b>Keyboard:</b>	Virtual on-screen keyboard, 5 freely programmable function keys
<b>Protection:</b>	IP54 (optional IP65)	<b>Graphics:</b>	Integrated graphics unit, DirectX12 support
<b>Operating temp.:</b>	-30 °C to 45 °C/-22 °F to 113 °F	<b>Processor:</b>	Intel Atom* QuadCore up to 4x 1.83 GHz (x5-E3940, Apollo Lake)
<b>Storage temp.:</b>	-30 °C to 70 °C/-22 °F to 158 °F	<b>Memory:</b>	Windows*** 10 IoT Enterprise + IGEL OS: 4 GB RAM, 64 GB flash - opt. 8 GB RAM, 128 GB flash Windows*** 11 IoT Enterprise: 8 GB RAM, 64 GB flash - opt. 128 GB flash
<b>Rel. humidity:</b>	5 % to 95 % (in operation), non-condensing	<b>Operating system:</b>	Windows*** 10 IoT Enterprise, Windows*** 11 IoT Enterprise, IGEL OS
<b>Dimensions:</b>	366 x 311 x 71 mm (W x H x D; without accessories)	<b>BIOS:</b>	UEFI BIOS, update-capable, bootable from LAN or USB as standard
<b>Weight:</b>	Approx. 4.9 kg (without accessories)	<b>Interfaces:</b>	Ethernet 100-BaseT/10-BaseT autoswitch, RS232, 1x USB 3.0, 3x USB 2.0, integrated speaker in speech output quality, audio/microphone input via jack plugs
<b>Power supply:</b>	9 to 72 V DC (electrically isolated)		
<b>Power consumption:</b>	Approx. 21 W (as standard), max. 61 W (freezer use)		
<b>Display:</b>	15" color TFT display XGA with LED backlight, 1024 x 768 pixels, 400 cd/m <sup>2</sup> , 2 status LEDs		

## TECHNICAL DATA



### Special features:

- Integrated energy buffer for short-term bridging of power breakdowns
- 2 integrated antennae
- Fan-less design
- Device start-up and shutdown via freely definable function keys (ATX function) and via ignition
- Sunlight readable

### Options:

- WLAN IEEE 802.11a/b/g/n/ac/x/k/v/r (2.4 GHz/5 GHz) incl. BT-compatible close-range network WLAN Security<sup>1</sup>: WPA, IEEE802.11i (Personal and Enterprise), WPA2, WPA2-PSK  
802.1x: PEAP-MSCHAPv2, PEAP-GTC, PEAP-TLS, EAP-TLS, EAP-TTLS, EAP-FAST, LEAP
- SOTI<sup>®</sup> MobiControl
- Integrated battery for up to 1.5 hours of operation

### ACD All-in-One:

- ACD All-in-One Support & Maintenance for operating system and firmware.
- Includes firmware updates, upgrades to higher OS versions, security patches and unlimited phone support

\* Registered trademark - Intel Atom  
 \*\* Registered trademark - Microsoft  
<sup>1</sup> Standard codification validated by ACD.  
 Subject to technical modifications.



# OPTIONS & ACCESSORIES



Power pack MFT1xSE



Voltage Supply Cable (3 wired)



MFT10SE/MFT12SE Mounting kit flat Standard



MFT10SE Mounting kit RAM Mount



MFT12SE/MFT15SE Mounting kit RAM Mount



MFT1xSE Mounting kit RAM Mount with holding clip



MFT10SE/MFT12SE Mounting kit flat Quick Change System



MFT10SE Mounting kit RAM Mount Quick Change System



MFT12SE/MFT15SE Mounting kit RAM Mount Quick Change System



Quick Change System Power Supply Cable (3 wired)



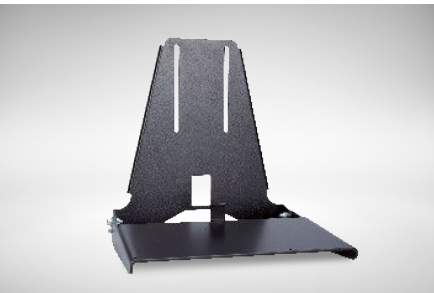
Quick Change System Adapter (3 wired)



MFT1xSE Adapter bracket



MFT1xSE Mounting kit Adapter bracket



MFT1xSE Keyboard Mounting Device – without keyboard



ML Keyboard black

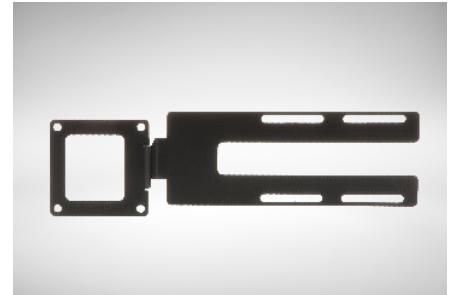
## OPTIONS & ACCESSORIES



MFT1xSE sideward Keyboard with USB-Hub



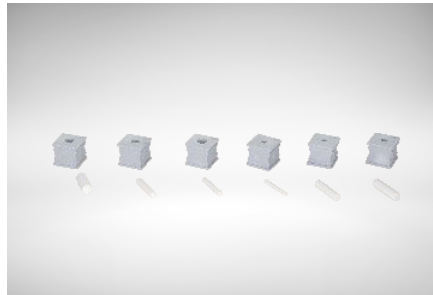
MFT1xSE sideward Keyboard without USB-Hub



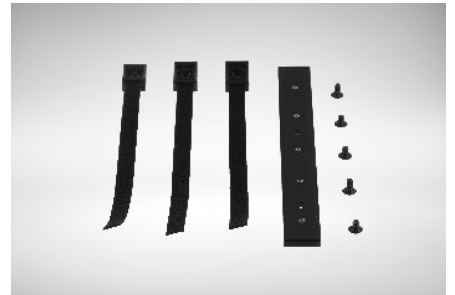
Mounting Kit for MFT1xSE sideward Keyboard



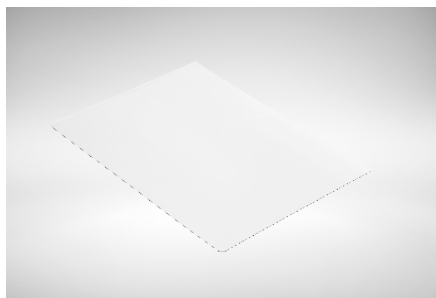
Interface cover IP65



Spout Set for interface cover IP65



MFT1xSE strain relief (for IP65 device variant)



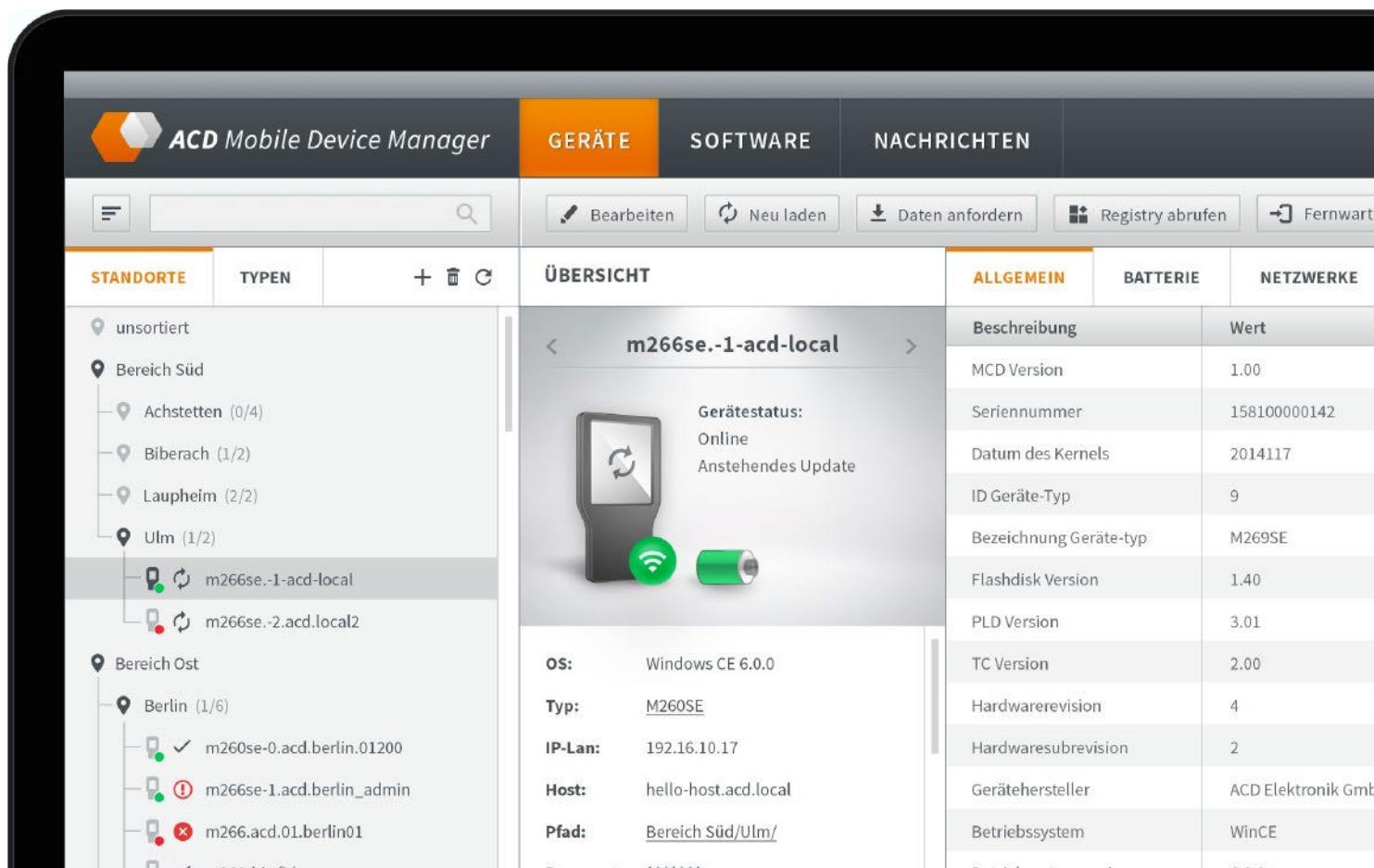
MFT10SE screen protector for resistive touch screen

Configure your equipment directly in the online configurator at:

<https://www.acd-gruppe.de/en/vehicle-terminal-configurator/>

Our sales department will also be happy to help you with the selection under the telephone number +49 7392 708-499

# 04 / SOFTWARETOOLS



## Our software tools for the management of Mobile Handheld Computers

Various Mobile Device Managers, supporting software applications for the operating systems Android™ Industrial+ and Windows®, and supporting ACD Android™ Industrial+ Apps.





## 04.1 / Softwaretools General

# SOTI® | MobiControl

### Mobility Management Made Easy

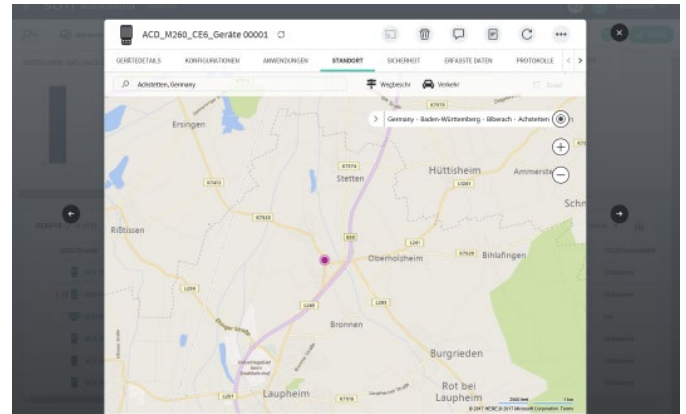
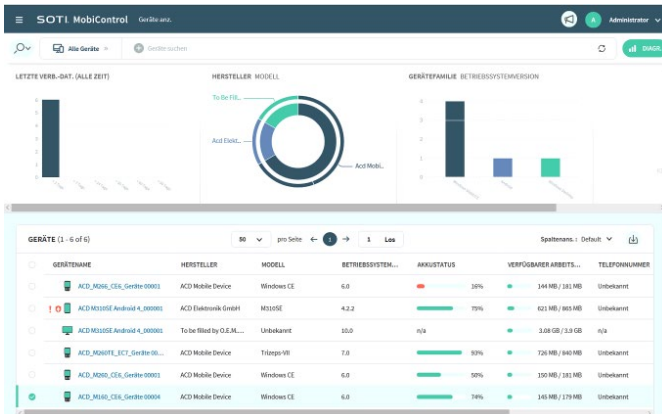
SOTI® MobiControl is an enterprise mobility management solution that secures and manages Apple® iOS, Google Android™\*, Microsoft Windows®\*\* and Linux® devices, throughout their entire lifecycle, from deployment to retirement. It control all aspects of business mobility - tracking physical assets, managing applications and content, as well as keeping devices and data safe and secure.

SOTI® is the proven leader for managing rugged, special-purpose devices used in key industries, such as: healthcare, transportation, logistics, retail and field services. It removes the complexity from managing a multi-OS, multi-vendor and multi-purpose business mobility program.

#### Important features:

Maintenance (Remote View, data synchronisation, 2-way-chat), Kiosk mode, automatic device configuration (SOTI® Stage), configurable browser (SOTI® Surf), SOTI® hub

SOTI® MobiControl is multi-OS and multi-platform capable and manages all of your devices.



**Device Agent System Requirements:**

- iOS 6.0 and above
- Android™\* 2.3 and above
- Windows®\*\* Mobile (5.0, 6.0, 6.1, 6.5, 6.5.3)
- Windows®\*\* Pocket PC (2002, 2003)
- Windows®\*\* CE .NET (4.2, 5.0, 6.0, 7.0)
- Windows®\*\* XP Sp3 (32-bit)
- Windows®\*\* 7 Desktop (32 and 64-bit)
- Windows®\*\* 8 Desktop (32 and 64-bit)
- Windows®\*\* 10 Desktop (32 and 64-bit)
- Linux Ubuntu 16.10 and above (with SOTI® MobiControl V.14)

SOTI® is a proven product innovator and EMM Industry leader. Over 17,000 customers across 170 countries rely on SOTI® for their EMM needs. SOTI® helps businesses around the world take mobility to endless possibilities.

\* Registered trademark - Android™ - Android is a trademark of Google LLC  
 \*\* Registered trademark - Microsoft  
 Subject to technical modifications.





## 04.2 / Softwaretools

# Mobile Handheld Computers

### OVERVIEW

- ACD ScanConfig
- Remote access via SCRCPY (via ADB)
- Android™\* Camera
- ACD SystemApp
- ACD KioskBrowser
- ACD KioskMode
- ACD WebAppService
- ACD EasyToConfig
- ACD EasyToStart
- ACD KeyConfig
- ACD Network Manager
- ACD M2UHF-RFID
- ACD EasyToConnect 2.0
- ACD HasciDataService
- ACD Remote File Commander

#### ACD All-in-One:

- ACD All-in-One Support & Maintenance for ACD Apps and Programs
- Includes updates, upgrades and unlimited phone support



	M2Smart®SE	M270SE
<p><b>ACD ScanConfig</b></p> <p>ACD ScanConfig can be used to configure the integrated scanner of the Mobile Handheld Computer:</p> <ul style="list-style-type: none"> <li>• Activate/deactivate barcode types</li> <li>• Expand barcode with prefix/suffix</li> <li>• Various other settings</li> </ul> <p>The scan data is integrated into the keyboard. When a program wants to use the scanner API, this hooks up to the ACD ScanService.</p>	×	×
<p><b>Remote access via SCRCPY (via ADB)</b></p> <p>Remote access via SCRCPY provides remote control. The free SCRCPY server runs on the Mobile Handheld Computers. The Mobile Handheld Computer can be controlled remotely from the PC using the installed SCRCPY.</p>	×	×
<p><b>Android™* Camera</b></p> <p>The Android™* Camera Tool is a camera sample program. It can be used to take photographs.</p>	×	
<p><b>ACD SystemApp</b></p> <p>ACD SystemApp is a program to display system information.</p>	×	×
<p><b>ACD KioskBrowser</b></p> <p>The ACD KioskBrowser is a simple, restrictive web browser that limits user access. In this case, for example, access is limited to the address bar.</p>	optional	optional
<p><b>ACD KioskMode</b></p> <p>With ACD KioskMode end users will only have access to specific applications.</p>	optional	optional
<p><b>ACD WebAppService</b></p> <p>Service for communication between custom web application and Mobile Handheld Computer.</p>	optional	optional

\* Registered trademark - Android™ - Android is a trademark of Google LLC  
Subject to technical modifications.

	M2Smart®SE	M270SE
<p><b>ACD EasyToConfig</b></p> <p>With ACD EasyToConfig, setting up and configuring mobile devices is easy. Significant features of this product include fast initial setup (WLAN, system settings, etc.) as well as easy transfer of the initial setup to other devices (by file or barcode).</p>	optional	optional
<p><b>ACD EasyToStart</b></p> <p>ACD EasyToStart makes it easy to set up and configure mobile devices. Significant features of this product are the fast initial setup of language, WLAN, device configuration via EasyToConfig barcodes (optional) and installation of a customized app.</p>	optional	
<p><b>ACD KeyConfig</b></p> <p>With the ACD KeyConfig a simple and clear configuration of all keys as well as all keyboard modules is possible. Furthermore, the soft keyboard can be easily activated and deactivated thanks to quick access via icon.</p>	optional	optional
<p><b>ACD Network Manager</b></p> <p>With the ACD Network Manager, information from WLAN and Ethernet is clearly displayed and related configurations can be made easily.</p>	optional	optional
<p><b>ACD M2UHF-RFID</b></p> <p>App for the M2Smart®SE with M2UHF-RFID module. The app allows reading, writing, locating and much more of UHF-RFID tags. Furthermore, various settings can be made.</p>	✗ with M2UHF-RFID module	
<p><b>ACD EasyToConnect 2.0</b></p> <p>With the ACD EasyToConnect 2.0 a simple pairing between HasciSE and counterpart device is possible.</p>	optional	optional
<p><b>ACD HasciDataService</b></p> <p>App for easy pairing with a BLE counterpart device (e.g. smartphones, Mobile Handheld Computers, Vehicle Mount Terminals), as well as for transferring data packets from the HasciSE via the GATT profile and further via intents or keyboard looping to the customer application.</p>	optional	optional
<p><b>ACD Remote File Commander</b></p> <p>ACD Remote File Commander is used for easy remote control of ACD Android™* devices via FTP.</p>	optional	optional

\* Registered trademark - Android™ - Android is a trademark of Google LLC  
Subject to technical modifications.



## 04.3 / Softwaretools **Wearable Scanner**

### **OVERVIEW**

- ACD EasyToConnect 2.0
- ACD HasciDataService
- ACD WebAppService

#### **ACD All-in-One:**

- ACD All-in-One Support & Maintenance for ACD Apps and Programs
- Includes updates, upgrades and unlimited phone support



	HasciSE SR	HasciSE MR	HasciSE AR
<p><b>ACD EasyToConnect 2.0</b></p> <p>App for easy pairing with a BLE counterpart device (e.g. smartphones, Mobile Handheld Computers, Vehicle Mount Terminals) and transferring data via the HID profile. Furthermore, new firmware versions can be uploaded to the HasciSE and information can be read out. The app is available for Android™, Windows® and Linux (Ubuntu/IGEL OS).</p>	optional	optional	optional
<p><b>ACD HasciDataService</b></p> <p>App for easy pairing with a BLE counterpart device (e.g. smartphones, Mobile Handheld Computers, Vehicle Mount Terminals), as well as for transferring data packets from the HasciSE via the GATT profile and further via intents or keyboard looping to the customer application.</p>	optional	optional	optional
<p><b>ACD WebAppService</b></p> <p>Service for communication between custom web application and HasciSE.</p>	optional only with HasciData Service	optional only with HasciData Service	optional only with HasciData Service

Subject to technical modifications



## 04.4 / Softwaretools Vehicle Mount Terminals

### OVERVIEW

- Kiosk Operation
- Scan2Key
- MFT Tray
- ACD UWF Manager
- ACD Standard Softkeyboard
- ACD EasyToConnect 2.0

#### ACD All-in-One:

- ACD All-in-One Support & Maintenance for ACD Apps and Programs
- Includes updates, upgrades and unlimited phone support

	MFT10SE with Windows®* IoT Enterprise	MFT12SE with Windows®* IoT Enterprise	MFT15SE with Windows®* IoT Enterprise
<p><b>Kiosk Operation</b></p> <p>The following configurations are possible through the operating system for Kiosk operation:</p> <ul style="list-style-type: none"> <li>• Kiosk mode of the Internet Explorer runs web applications or websites in full screen mode</li> <li>• Group guidelines for configuring a user account that allows only one defined application</li> <li>• The Embedded Shell Launcher runs a defined application instead of the standard Windows user interface</li> </ul>	×	×	×
<p><b>Scan2Key</b></p> <p>The Scan2Key is a keyboard looping via a serial interface. Read bar-codes are handled as keyboard inputs.</p>	×	×	×
<p><b>MFT Tray</b></p> <p>The MFT Tray is a diagnosis/configuration program for battery monitoring and system parameters.</p>	×	×	×
<p><b>ACD UWF Manager</b></p> <p>The purpose of the ACD UWF Manager is the simple configuration of the “Unified Write Filter” (Embedded Lockdown Feature). The activated filter protects the file system against damage or unauthorized modifications.</p>	×	×	×
<p><b>ACD Standard Softkeyboard</b></p> <p>ACD Standard Softkeyboard for MFT1xSE with Windows®* 10 IoT Enterprise and Windows®* 11 IoT Enterprise.</p>	×	×	×
<p><b>ACD EasyToConnect 2.0</b></p> <p>With the ACD EasyToConnect 2.0 a simple pairing between HasciSE and counterpart device is possible.</p>	optional	optional	optional

\* Registered trademark - Microsoft  
Subject to technical modifications.



# 05 / MOBILE WORKSTATION MAX BLACK EDITION



## Saves travel time and makes IT equipment mobile

The mobile workstations are particularly suitable for flexible data acquisition and independent work in the entire warehouse environment. The extremely robust design and the flexible modular system ensure a workstation that is tailored to requirements and optimized for the process. Thanks to the different performance classes, it is possible to supply the IT equipment over several shifts. The standardized hole pattern allows commercially available flex tools to be attached. The optimized side profile ensures easy attachment of accessories.



## 05 / Mobile Workstation MAX 100

### TECHNICAL DATA

#### Basic structure:

- Aluminium base frame with four castors (two with locking brakes)
- Easy maneuverability due to ergonomic handle and industrial castors
- Dimensions: 500 x 1,150 x 507 mm (W x H x D)
- Weight: Approx. 39 kg
- Load capacity: Total weight max. 70 kg; table top max. 10 kg
- Temperature range: 0 °C bis 40 °C

#### Equipment:

- Desk: 496 x 448 mm (W x D)
- External charger 12 V/7 A
- 1x AGM lead acid battery 12 V/36 Ah (maintenance-free)
- Battery indicator via LED display on battery module
- 1x Schuko socket (German)
- Battery capacity: Approx. 8 hours at 30 VA load

#### Equipment variants:

- MAX STD 100:  
OnBoard sinus power inverter  
230 V AC/250 VA

## TECHNICAL DATA



**Options:**

- Power strip with residual-current circuit breaker (RCD)

Subject to technical modifications.





## 05 / Mobile Workstation MAX BE Li-Ion

### TECHNICAL DATA

#### Basic structure:

- Aluminium base frame with four castors (two with locking brakes)
- Adjustable work height, standard 1,130 mm
- Easy to push thanks to ergonomic handle and large castors
- Very stable due to corner castors and low centre of gravity
- Dimensions: 575 x 1,130 x 575 mm (W x H x D)
- Weight: Approx. 68 - 87 kg (depending on version)
- Temperature range: 0 °C to 40 °C/32 °F to 104 °F

#### Equipment:

- Desk: 500 x 445 mm (W x D), desk height adjustable
- Rear panel standard
- OnBoard charger  
17 A (MAX BE 300 Li-Ion),  
20 A (MAX BE 400 Li-Ion),  
35 A (MAX BE 500 Li-Ion),  
16 A (MAX BE 750 Li-Ion),  
25 A (MAX BE 1200 Li-Ion)

- Lithium-iron phosphate battery 12.8 V/100 Ah (maintenance-free):  
1x MAX BE 300 Li-Ion/MAX BE 400 Li-Ion/  
MAX BE 500 Li-Ion or  
2x MAX BE 750 Li-Ion/MAX BE 1200 Li-Ion
- Integrated battery management system to balance and supervise battery cells
- 5- / 6-way power outlet Schuko (country-specific) with residual current circuit breaker (RCD)
- Bypass circuit during the charging process (MAX BE 400 Li-Ion/MAX BE 500 Li-Ion/  
MAX BE 750 Li-Ion/MAX BE 1200 Li-Ion)

#### Equipment variants:

- MAX BE 300 Li-Ion:  
OnBoard sinus power inverter 230 V AC/375 VA
- MAX BE 400 Li-Ion:  
OnBoard sinus power inverter 230 V AC/400 VA
- MAX BE 500 Li-Ion:  
OnBoard sinus power inverter 230 V AC/500 VA
- MAX BE 750 Li-Ion:  
OnBoard sinus power inverter 230 V AC/800 VA
- MAX BE 1200 Li-Ion:  
OnBoard sinus power inverter 230 V AC/1200 VA (suitable for most laser printer)

## TECHNICAL DATA



**Options:**

- ACD Vehicle Mount Terminal from the MFT1xSE series
- Bluetooth Module Li-Ion

Subject to technical modifications.





## 05 / Mobile Workstation MAX BE STD

### TECHNICAL DATA

#### Basic structure:

- Aluminium base frame with four castors (two with locking brakes)
- Adjustable work height, standard 1,130 mm
- Easy to push thanks to ergonomic handle and large castors
- Very stable due to corner castors and low centre of gravity
- Dimensions: 575 x 1,130 x 575 mm (W x H x D)
- Weight: Approx. 110 kg (depending on version)
- Temperature range: 0 °C to 40 °C/32 °F to 104 °F

#### Equipment:

- Desk: 500 x 445 mm (W x D), desk height adjustable
- Rear panel standard
- OnBoard charger 12 A
- 2x AGM batteries 12 V/60 Ah (maintenance-free)
- 24 V DC connector including plug

- Battery charge indicator displays battery capacity including acoustic and optical warning signal on reaching final discharge voltage with automatic stop
- 5- / 6-way power outlet Schuko (country-specific) with residual current circuit breaker (RCD) (not with MAX BE STD OWR)

#### Equipment variants:

- MAX BE STD 300: OnBoard sinus power inverter 230 V AC/375 VA
- MAX BE STD 750: OnBoard sinus power inverter 230 V AC/800 VA
- MAX BE STD 1200: OnBoard sinus power inverter 230 V AC/1200 VA (suitable for most laser printer)
- MAX BE STD OWR: Without sinus power inverter



## TECHNICAL DATA



**Options:**

- ACD Vehicle Mount Terminal from the MFT1xSE series

Subject to technical modifications.



## 05 / Mobile Workstation MAX BE BWS-R

### TECHNICAL DATA

#### Basic structure:

- Aluminium base frame with four castors (two with locking brakes)
- Adjustable work height, standard 1,130 mm
- Easy to push thanks to ergonomic handle and large castors
- Very stable due to corner castors and low centre of gravity
- Dimensions: 575 x 1,130 x 575 mm (W x H x D)
- Weight: Approx. 110 kg (depending on version)
- Temperature range: 0 °C to 40 °C/32 °F to 104 °F

#### Equipment:

- Desk: 500 x 445 mm (W x D), desk height adjustable
- Rear panel standard
- Roll battery changing station for MAX powerstation for easy battery change
- OnBoard charger 12 A
- 2x AGM batteries 12 V/60 Ah (maintenance-free)

- 24 V DC connector including plug
- Battery charge indicator displays battery capacity including acoustic and optical warning signal on reaching final discharge voltage with automatic stop
- 5- / 6-way power outlet Schuko (country-specific) with residual current circuit breaker (RCD) (not with MAX BE BWS-R OWR)

#### Equipment variants:

- MAX BE BWS-R 300: OnBoard sinus power inverter 230 V AC/375 VA
- MAX BE BWS-R 750: OnBoard sinus power inverter 230 V AC/800 VA
- MAX BE BWS-R 1200: OnBoard sinus power inverter 230V AC/1200 VA (suitable for most laser printer)
- MAX BE BWS-R OWR: Without sinus power inverter

## TECHNICAL DATA

**MAX powerstation:**

- Battery changing station for two battery trays
- Twin delivery unit with roll system for changing the batteries
- External battery charger (230 V) with 1.8 m cable length (as option)
- Necessary for MAX BE with roll battery change system

**Options:**

- ACD Vehicle Mount Terminal from the MFT1xSE series

Subject to technical modifications.





## 05 / Mobile Workstation MAX BE GO with drive

### TECHNICAL DATA

#### Basic structure:

- Aluminium base frame with four castors (two with locking brakes)
- Adjustable work height, standard 1,130 mm
- Easy movement due to electric drive, ergonomic handle and large castors
- Very stable due to corner castors and low centre of gravity
- Dimensions with standard table top: 575 x 1,130 x 575 mm (W x H x D)
- Dimensions with large table top: 700 x 1,130 x 750 mm (W x H x D)
- Middle shelf: 500 x 445 mm (W x D)
- Weight: Approx. 85 - 110 kg (depending on version)
- Temperature range: 0 °C to 40 °C/32 °F to 104 °F

#### Electric drive:

- Ergonomic control unit for drive commands integrated on the handle
- Drive commands: Forward, reverse
- Speed: Max. 4 km/h, Reduced speed for maneuvering and customized configuration possible
- Max. driving force: 200 N
- Distance when using 10 % battery capacity: 3 km for MAX BE STD variants and 6 km for MAX BE Li-Ion variants
- Slope: Max. 10 %
- Easy retrofitting of all relevant MAX BE models possible through ACD

## TECHNICAL DATA



### MAX GO versions:

Many MAX BE models of the ACD are available as MAX BE GO version:

- MAX BE 750 Li-Ion
- MAX BE 1200 Li-Ion
  
- MAX BE STD 300
- MAX BE STD 750
- MAX BE STD 1200
- MAX BE STD OWR
  
- MAX BE BWS-R 300
- MAX BE BWS-R 750
- MAX BE BWS-R 1200
- MAX BE BWS-R OWR

### Options:

- ACD Vehicle Mount Terminal from the MFT1xSE series
- Further options of the respective MAX BE models

Subject to technical modifications.



## 05 / Mobile Workstation MAX BE TK



### TECHNICAL DATA

#### Basic structure:

- Aluminium base frame with four castors (two with locking brakes)
- Adjustable work height, standard 1,130 mm
- Easy to push thanks to ergonomic handle and large castors
- Very stable due to corner castors and low centre of gravity
- Dimensions: 575 x 1,130 x 575 mm (W x H x D)
- Weight: Approx. 105 kg (depending on version)
- Temperature range: -28 °C to 40 °C / -18.4 °F to 104 °F

#### Equipment:

- Desk: 500 x 445 mm (W x D), desk height adjustable
- Rear panel multifunction
- OnBoard charger 10 A in freezer use layout
- 2x AGM batteries 12 V/60 Ah (maintenance-free) with battery isolation
- 24 V DC connector including plug

#### Equipment variants:

- Battery charge indicator displays battery capacity including acoustic and optical warning signal on reaching final discharge voltage with automatic stop
- Heat insulation
- MAX BE TK OWR: Without sinus power inverter
- MAX BE TK BWS-R OWR: With roll battery change system, without sinus power inverter



## TECHNICAL DATA

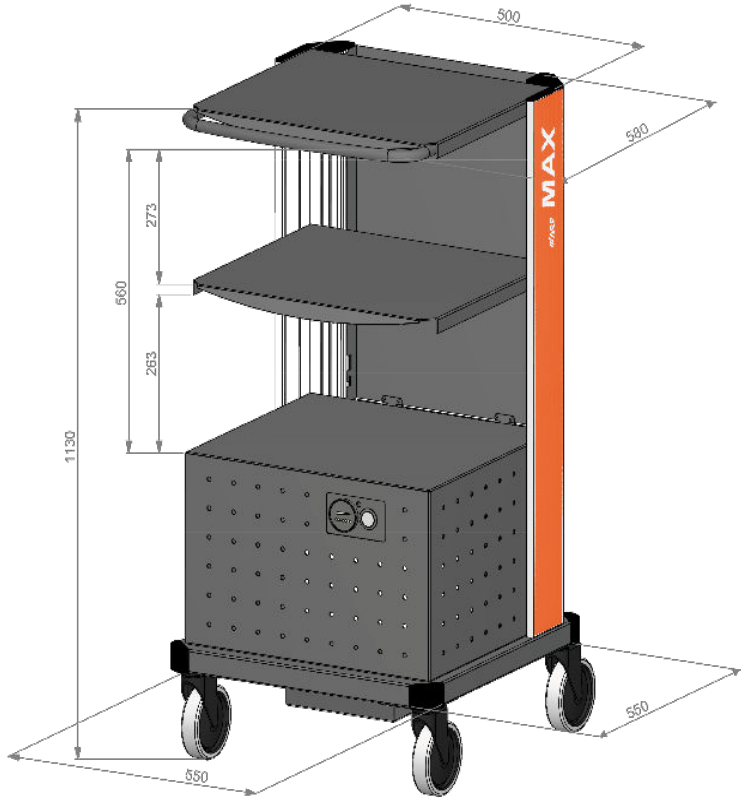
**MAX powerstation:**

- Battery changing station for two battery trays
- Twin delivery unit with roll system for changing the batteries
- External battery charger (230 V) with 1.8 m cable length (as option)
- Necessary for MAX BE TK with roll battery change system

**Options:**

- ACD Vehicle Mount Terminal from the MFT1xSE series

Subject to technical modifications.



## MAX BE STD

Total storage area:  
6.675 cm<sup>2</sup>



## MAX PLUS

Total storage area:  
9.219 cm<sup>2</sup>

VS.

# 05 / Mobile Workstation MAX Plus - 40 % more space

## TECHNICAL DATA

### Basic structure:

- Aluminium base frame with four castors (two with locking brakes)
- Adjustable work height; standard 1,130 mm
- Easy to push thanks to ergonomic handle and large castors
- Very stable due to corner castors and low centre of gravity
- Dimensions: 630 x 1,130 x 630 mm (W x H x D)
- Weight: Depending on variant
- Temperature range: 0 °C to 40 °C / 32 °F to 104 °F

### Equipment:

- Desk: 567 x 542 mm (W x D), desk height adjustable
- Rear panel multifunction
- OnBoard charger: Depending on variant

- Battery charge indicator displays battery capacity including acoustic and optical warning signal on reaching final discharge voltage with automatic stop
- 5- / 6-way power outlet Schuko (country-specific) with residual current circuit breaker (RCD)

### Equipment variants:

- According to customer's requirements, for appropriate quantities

### Storage area:

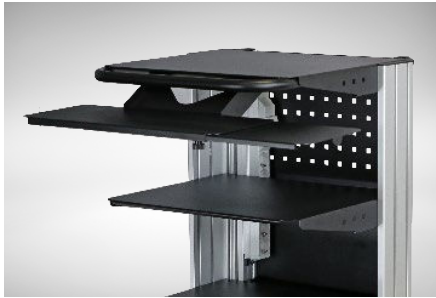
- Almost 40% more storage space than MAX BE STD for technical equipment

**ON REQUEST  
FROM 25 PIECES**

If you are interested, please feel free to contact us.

# OPTIONS & ACCESSORIES

**MAX BE Li-Ion / MAX BE STD /  
MAX BE BWS-R / MAX BE GO / MAX BE TK**



Keyboard/mouse extension B500



Rear panel standard



Rear panel multifunction

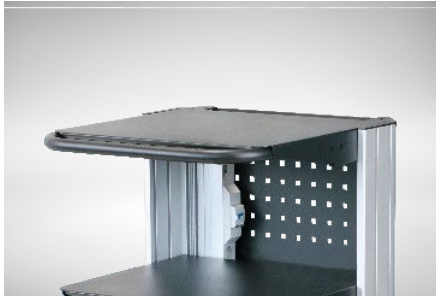


Table top B500 top – with grip



Table top B700 – T600 top – with grip, extra large/  
VARIABEL



Table top B1100 – T680 top, extra large/FIX



Table top B500 middle – without grip



Table top B500 middle – with extension



Height adjustment for table top B500 Top -  
with handle



Printer shelf B500  
Front work surface enlargement



Printer shelf rear panel  
(520 x 315 mm)



Printer shelf rear panel  
(520 x 400 mm)



Drawer B500-160 – with lock



Drawer B500-80 – without lock



Pen holder magnetic



# OPTIONS & ACCESSORIES

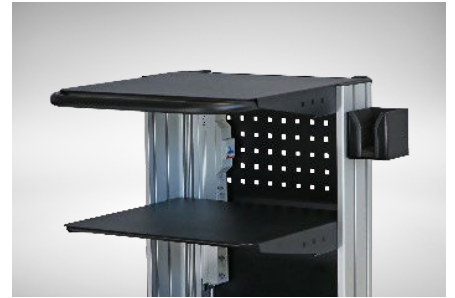
MAX BE Li-Ion / MAX BE STD /  
MAX BE BWS-R / MAX BE GO / MAX BE TK



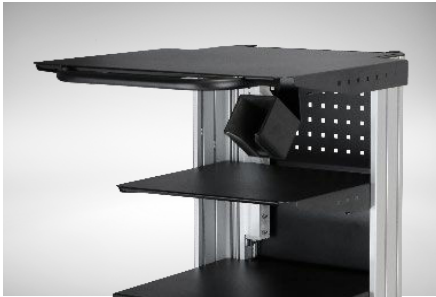
Pen holder



Coffee cup holder



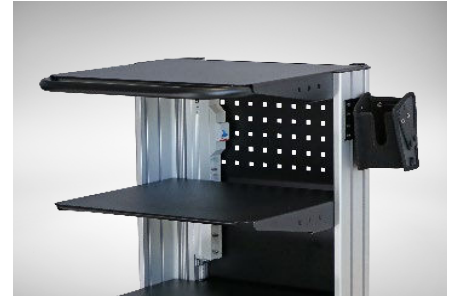
Scanner holder



Scanner holder inclined



Lateral storage box



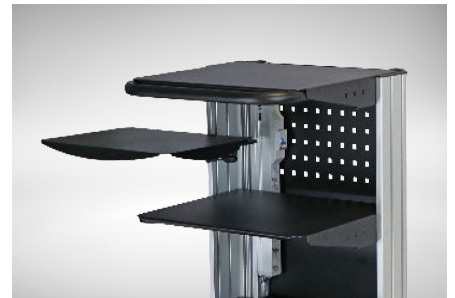
Holster bag incl. mounting kit



Label roll holder A



Label roll holder A 2-fold



Swivel plate B420



Drawer mat for Table top B500



Drawer mat for swivel plate B420



Drawer mat for Table top B700



Monitor support VESA 75/100



Monitor support VESA 75/100 (pillar)



Additional holder for monitor support VESA 75/100 (pillar)

# OPTIONS & ACCESSORIES

**MAX BE Li-Ion / MAX BE STD /  
MAX BE BWS-R / MAX BE GO / MAX BE TK**



Dual monitor holder vertical VESA 75/100 (pillar)



Dual monitor holder horizontal VESA 75/100 (pillar)



Monitor device RAM Mount VESA 75/  
Arm length 143 mm



Monitor device RAM Mount VESA 75/  
Arm length 231 mm



Monitor device RAM Mount VESA 75/100/  
Arm length 330 mm



Thin-client PC mounting bracket



Waste box - dustbin



Waste box - magnetic



Ramming protectors (set of 3)



Cable holder



Protection cover small for Table top B500



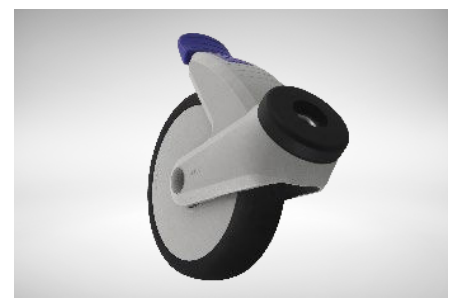
Protection cover medium for Table top B700



Protection cover large for Table top B1100



Velcro cable fastening set



Lockable caster - M12

# OPTIONS & ACCESSORIES

**MAX BE Li-Ion / MAX BE STD /  
MAX BE BWS-R / MAX BE GO / MAX BE TK**



Tire



Conversion kit fixed castors (non steering)



Bluetooth Module Li-Ion



Connecting cable - VE.Direct to USB Interface



6-way power outlet/Germany



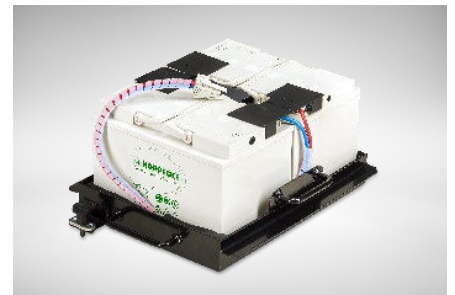
5-way power outlet/Switzerland



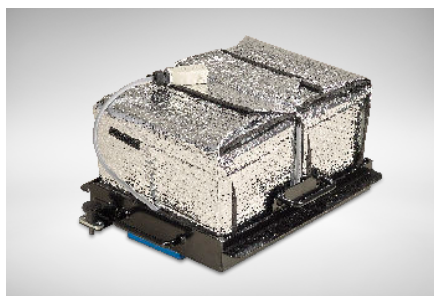
5-way power outlet/Great Britain



6-way power outlet/France/Belgium



BWS-R battery change tray



BWS-R battery change tray (freezer use)



Charger, external



Charger, external (freezer use)

Configure your equipment directly in the online configurator at:

<https://www.acd-gruppe.de/en/mobile-devices/mobile-handheld-computer/configurator-mobile-workstation-max/>

Our sales department will also be happy to help you with the selection under the telephone number +49 7392 708-499.





## 05 / Mobile Workstation PowerBox PB300 BE Li-Ion

### TECHNICAL DATA

#### Basic structure:

- Sturdy steel frame in deep black with side carrying handles
- Easy to transport and move with ergonomic handles
- Very stable due to low centre of gravity
- Dimensions: 316 x 314 x 431 mm (W x H x D)
- Weight: 24 kg
- Temperature range: 0 °C to 40 °C/32 °F to 104 °F

#### Equipment:

- OnBoard charger 15 A
- 1x Lithium-iron phosphate battery 12.8 V/64.8 Ah (maintenance-free)
- OnBoard sinus power inverter 230 V AC/375 VA
- Integrated battery management system to balance and supervise battery cells
- Acoustic and optical warning signal on reaching final discharge voltage
- Residual current circuit breaker (RCD)
- Charging time 4 h

## TECHNICAL DATA



### Connection options:

- 1x 230 V AC
- 1x 24 V DC (optional)
- 2x USB-A (5 V/2.1 A)

### Options:

- DC/DC-Converter (12 V DC to 24 V DC)
- Bluetooth Module Li-Ion

Subject to technical modifications.

## OPTIONS & ACCESSORIES



Bluetooth Module Li-Ion

Configure your equipment directly in the online configurator at:

<https://www.acd-gruppe.de/en/mobile-devices/mobile-handheld-computer/configurator-mobile-workstation-max/>

Our sales department will also be happy to help you with the selection under the telephone number +49 7392 708-499.

# 06 / PICK BY VOICE



## Voice-controlled picking

With the Voxtel® pick by voice solution and the appropriate voice software, paperless picking is consistently implemented. Increase efficiency and quality picking by standardizing picking processes. In online operation, you have access to the current stock levels at any time and time-consuming stocktaking is no longer necessary.





## 06 / Pick by Voice Voxter®

### TECHNICAL DATA

<b>Housing:</b>	ABS	<b>Processor:</b>	NXP®* i.MX8M Mini, 4x Cortex A53 (4x 1.6 GHz) and 1x Cortex M4 (1x 400 MHz)
<b>Protection:</b>	IP67	<b>Memory:</b>	16 GB Flash, 2 GB RAM
<b>Operating temperature:</b>	-10 °C to 50 °C/14 °F to 122 °F	<b>Operating system:</b>	Android™** Industrial+
<b>Storage temperature:</b>	-20 °C to 50 °C/-4 °F to 122 °F		
<b>Dimensions:</b>	112 x 68 x 51 mm (widest point) (L x W x D)		
<b>Weight:</b>	Approx. 285 g		
<b>Power supply:</b>	Quick-change rechargeable battery, li-ion with 24.5 Wh (6,800 mAh/3.6 V), docking station or battery charger		
<b>Display:</b>	3 twin-colour LEDs for status display		
<b>Keyboard:</b>	ON/OFF button		

## TECHNICAL DATA



### Interfaces:

- WLAN according to IEEE 802.11 a/b/g/n/ac/d/h/e/i/r/k/w/v (2.4 GHz/5 GHz) incl. BT-compatible close-range network 5.0  
WLAN Security<sup>1</sup>: WEP, WPA, IEEE802.11i (Personal and Enterprise), WPA2, WPA2-PSK, 802.11x: authentication
- BT-compatible close-range network
- Robust headset connector

\* Registered trademark - NXP

\*\* Registered trademark - Android™ - Android is a trademark of Google LLC

<sup>1</sup> Standard codification validated by ACD.

Subject to technical modifications.

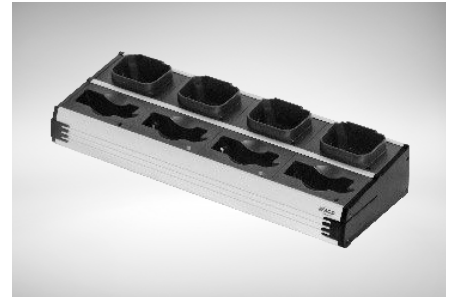
## OPTIONS & ACCESSORIES



DSVoxter



Voxter® multi charger for 2-fold



Voxter® multi charger for 8-fold



Voxter® Replacement Battery



VoiceWear



Headset

**Our sales department will also be happy to help you with the selection under the telephone number +49 7392 708-499**



# **WE ARE LOOKING FORWARD TO YOUR INQUIRY!**

We also offer all products for testing in advance.  
Simply make an appointment with our sales department.

**ACD Elektronik GmbH  
Engelberg 2  
88480 Achstetten**

**Tel.: +49 7392 708-499  
Fax: +49 7392 708-490  
[sales@acd-elektronik.de](mailto:sales@acd-elektronik.de)**